

Supplementary materials

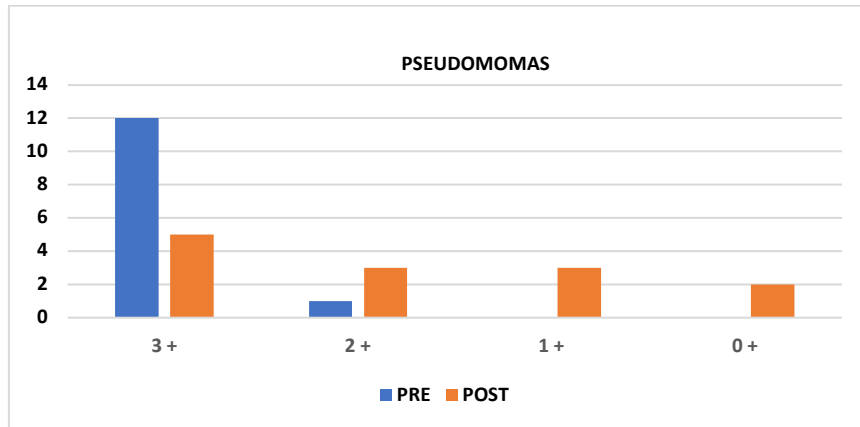


Figure 1: isolation of pseudomonas with Swab pre and post treatment

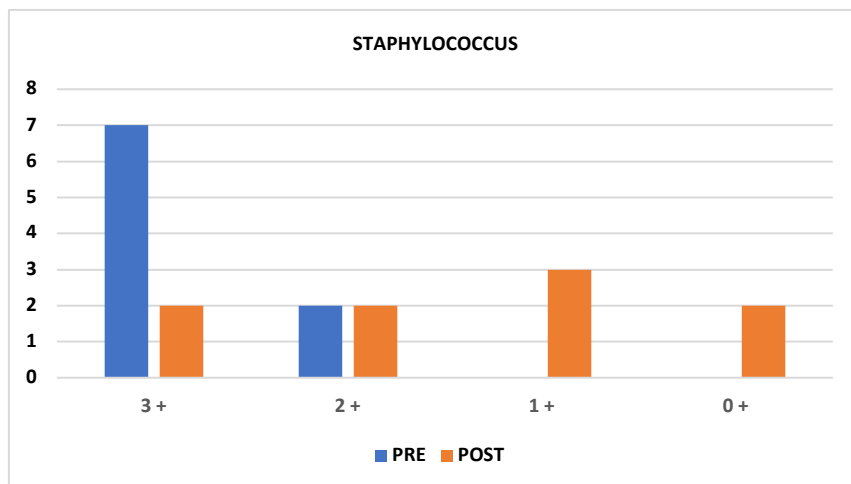


Figure 2: isolation of staphylococcus with Swab pre and post treatment

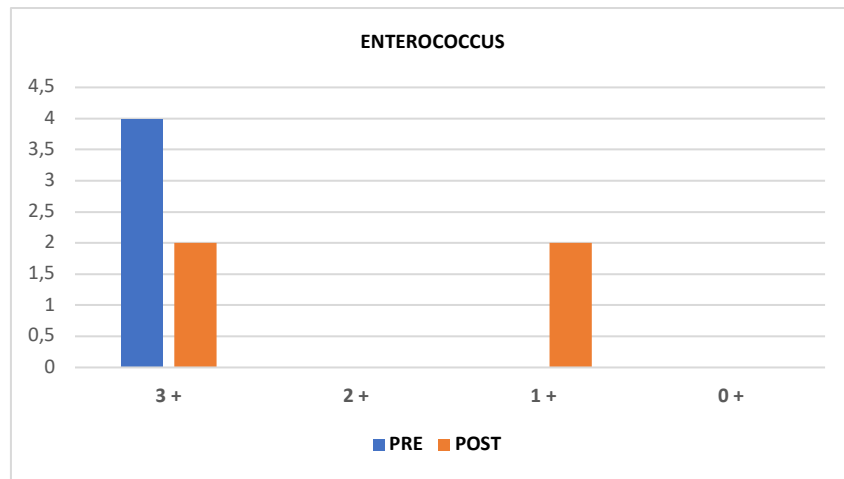
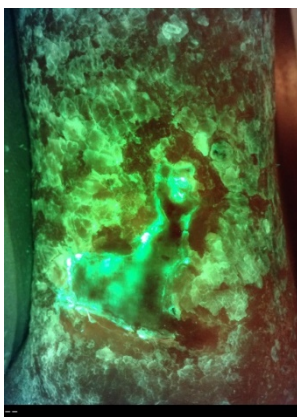
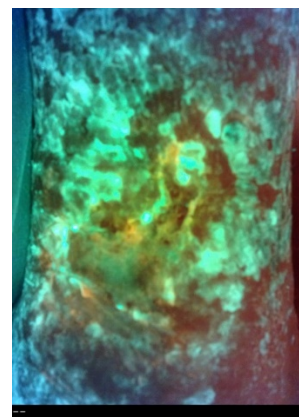


Figure 3: isolation of Enterococcus with Swab pre and post treatment

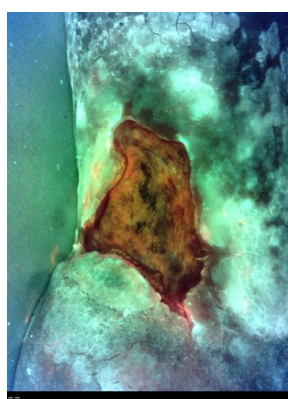


PRE

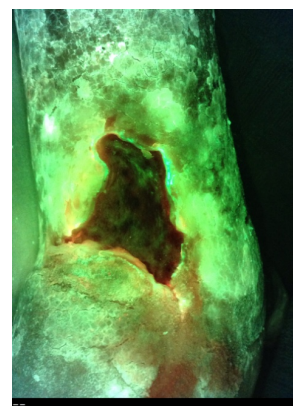


POST

Figure 4: case 01 pre and post treatment, imaging with Moleculight (Pseudomonas)



PRE



POST

Figure 5: case 03 pre and post treatment, imaging with Moleculight (Staphylococcus)

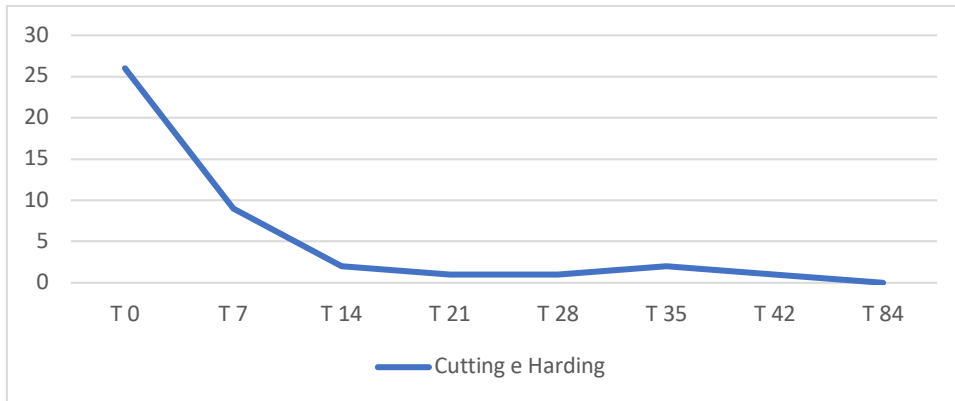


Figure 6: Evolution of the Cutting and Harding score during the study.

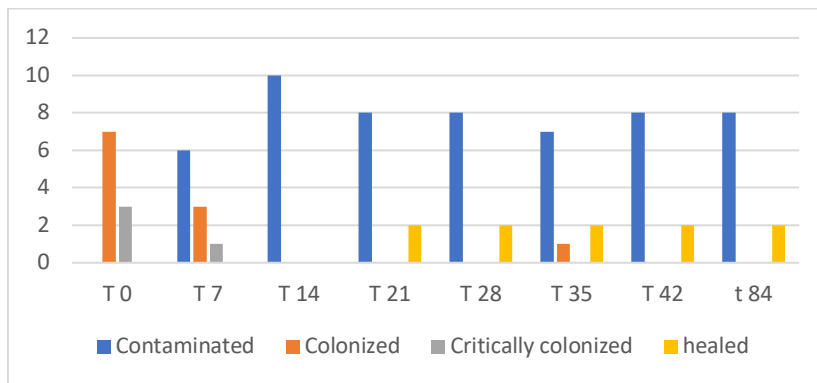


Figure 7: clinical evaluation of infection

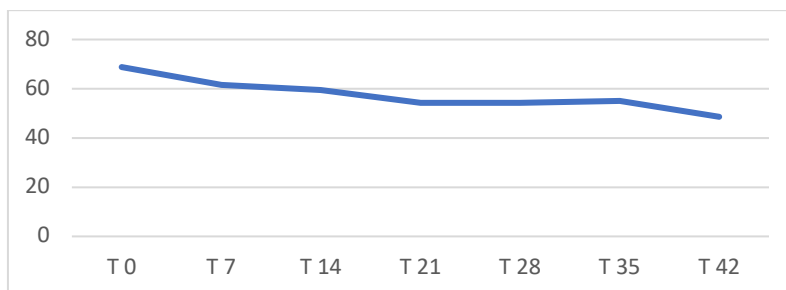


Figure 8: global wound's area evolution

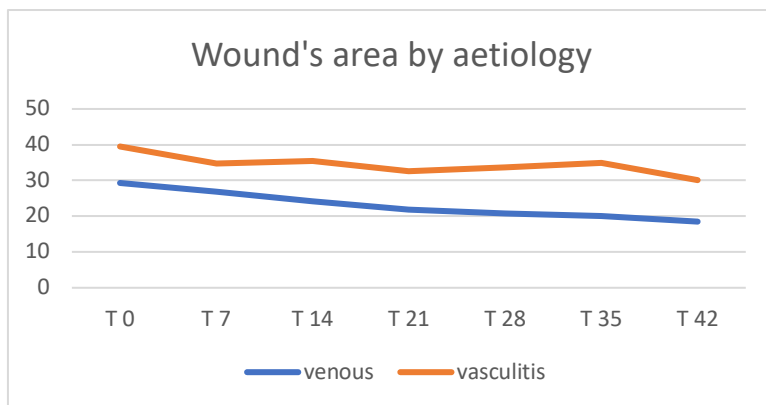


Figure 9: wound's area evolution by aetiology

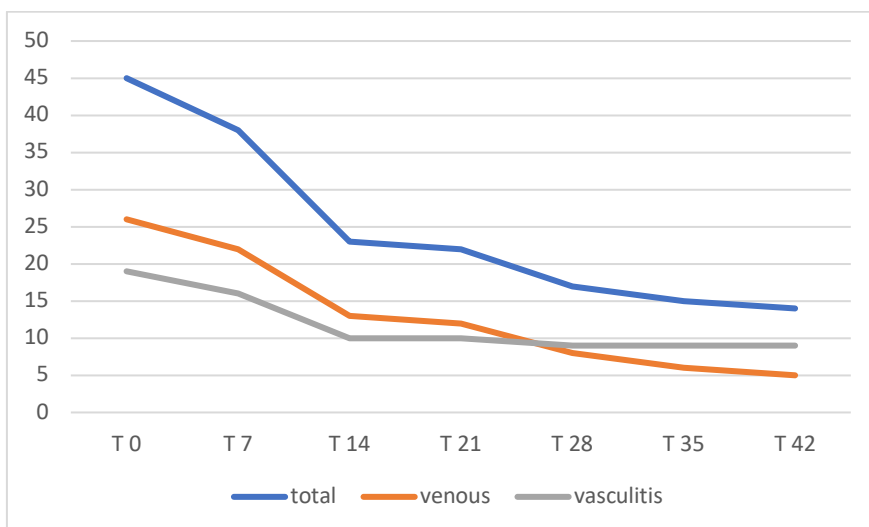


Figure 10: pain evolution during treatment period

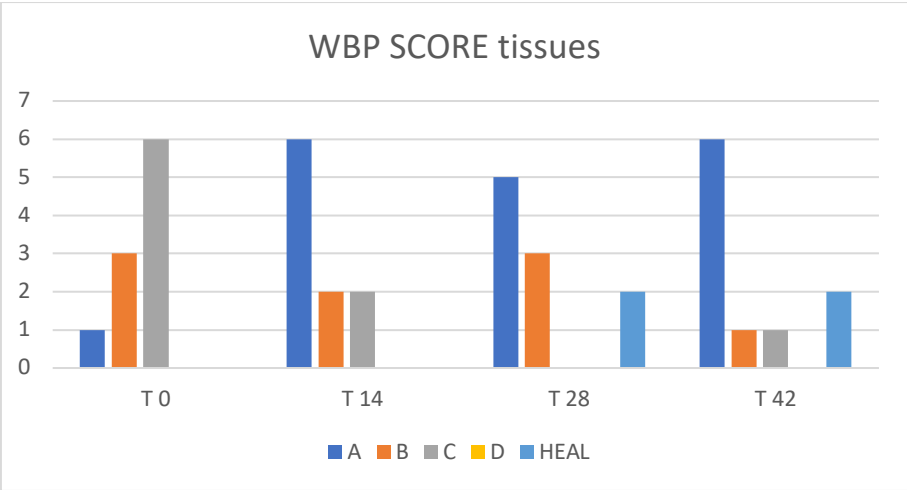


Figure 11: changing in wound bed tissue during treatment period

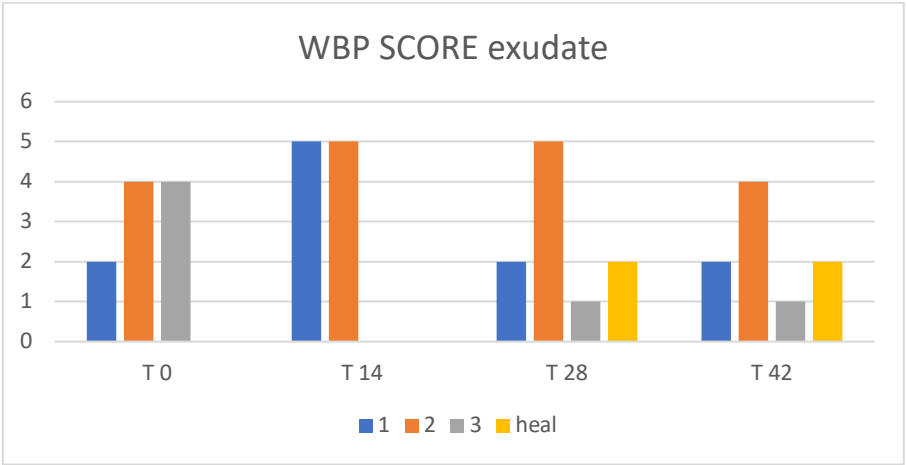


Figure 12: changing in level of exudate during treatment period.

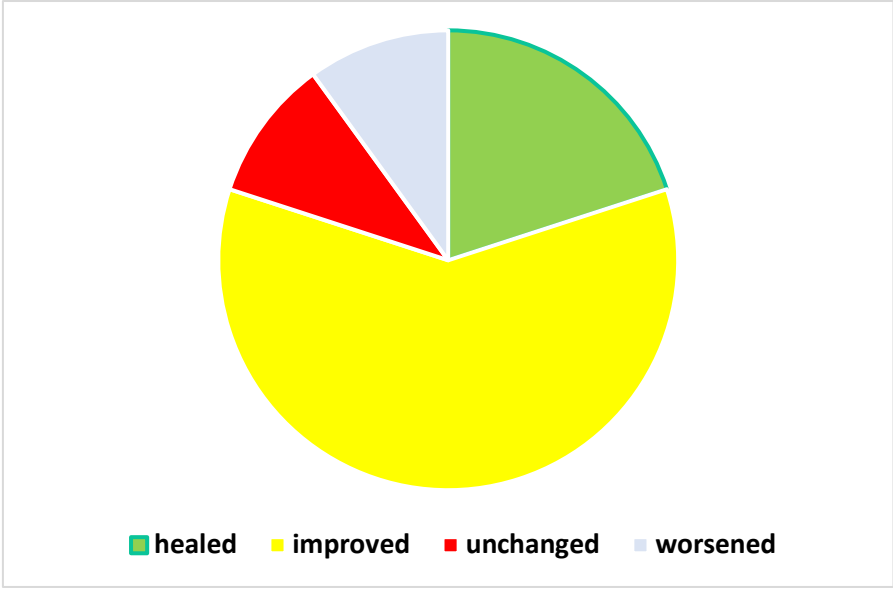


Figure 13: global performance